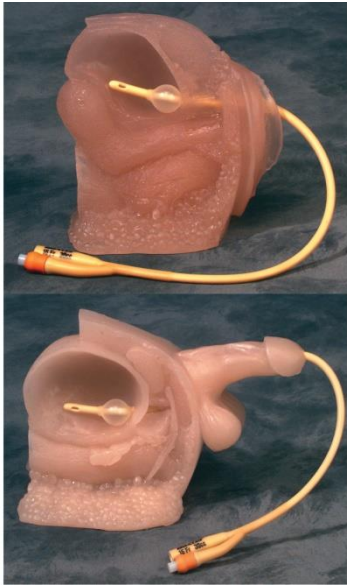


Medical Procedure Training Models, Products & Simulators

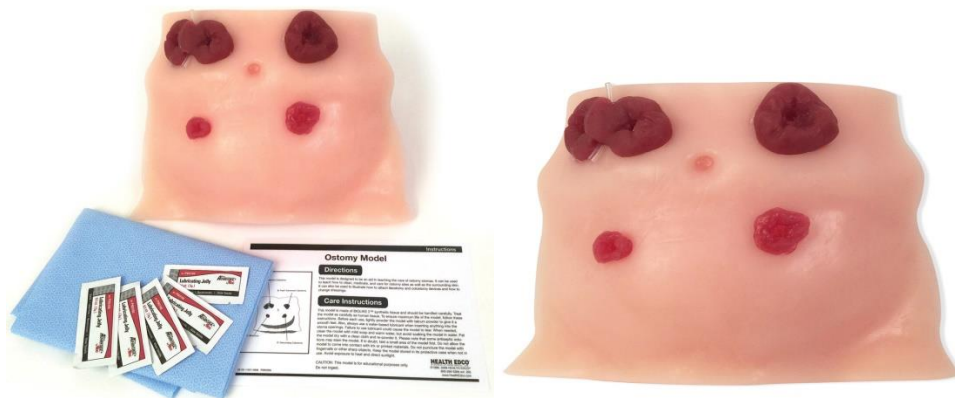
1 FEMALE & MALE CATHETER

An excellent set of teaching tools, these popular male and female catheter models provide realistic training in the proper insertion of a urinary catheter. Perfect for training students and building confidence in performing the procedure.



2. OSTOMY CARE MODEL

Durable with a lifelike feel, this model is ideal for training students how to care for ostomy stomas. Perfect for teaching how to clean, medicate, and care for ostomy sites, as well as the surrounding skin. One of the four stomas on the model can also be used to illustrate how to attach ileostomy and colostomy devices.



3 INJECTION TEACHING MODEL

Superior injection training at an affordable price! Perfect for student education and training, this durable injection model can endure hundreds of punctures. Allows users to practice intradermal, subcutaneous, and intramuscular injections. Great for building student confidence in procedure training.



4. PRESSURE SORE CLEANSING AND DRESSING MODEL

Caring for pressure ulcers requires special training. Featuring stage I and stage III ischial ulcers, a stage II trochanteric ulcer, and a stage IV sacral ulcer, this affordable training model can be washed, treated with most antiseptics and medicines, and dressed just like an actual patient.



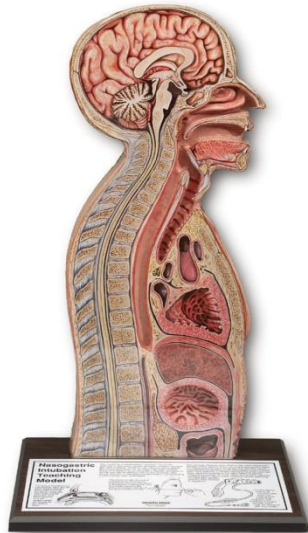
5. DELUXE TB TESTING ARM SET

With a soft, lifelike feel, these three models train students to read TB test results by feeling for and measuring skin indurations. One beige model and the brown model feature variations in skin color that typically occur around test sites. A second beige model lacks the appearance of erythema, reinforcing the idea that accurate assessment relies on measurement of the induration, not of any accompanying redness. An essential teaching tool.



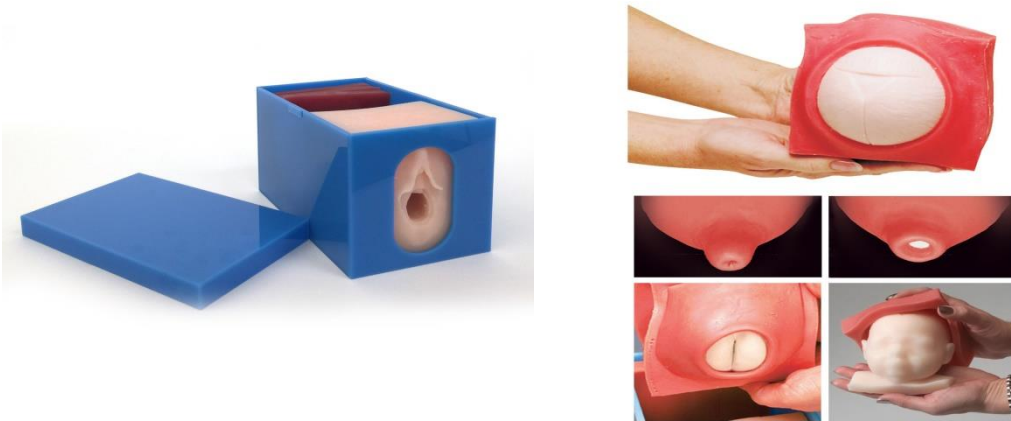
6. NASOGASTRIC INTUBATION MODEL

Designed to facilitate training in the proper insertion of feeding tubes, this model is a 1¼" deep modeled cast of the nose, mouth, pharynx, trachea, esophagus, and stomach. Plexiglas front allows viewers to watch during demonstrations of the procedure. Also features a tracheostoma for endotracheal aspiration.



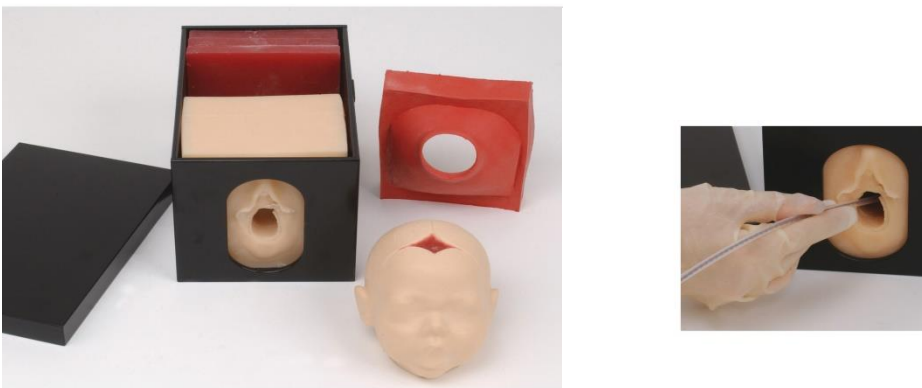
7 FETAL MONITORING AND LABOUR PROGRESS MODEL SET

Provide realistic simulation for vaginal examinations, labor progress, assessment of dilation, palpation of fetal fontanelles and suture lines, and assessment of the position of the vertex. Versatile model set includes fetal head, lower uterine segment, fetal buttocks for breech presentation, and four interchangeable cervical dilation models. The fetal head and cervical dilation models have been updated for a more lifelike feel and greater durability. Components fit in a durable plastic case that facilitates visualization and cleaning.



8 INTERNAL FETAL MONITOR TRAINER

An ideal teaching tool, this lifelike, 3-D trainer provides realistic simulation for proper insertion of an internal electrode for fetal heart monitoring. The trainer includes a fetal head with palpable, realistic fontanelles and suture lines, a lower uterine segment, and one cervical dilation model depicting 4 cm of dilation. Components fit into a durable plastic case that facilitates visualization and easy removal for cleaning.



9 ABDOMINAL PALPATION MODEL SET

A unique, 3-D teaching tool, this model set is perfect for performing Leopold's maneuvers and for demonstrating palpation of the abdomen to determine fetal lie, presentation, and position. The Abdominal Palpation Model includes a fetus with movable arms and legs, firm buttocks, and a head with palpable anterior and posterior fontanelles. The fetal body flexes to allow demonstration of all presentations and positions. The fetus and included vinyl pelvis rest within the abdominal portion of the model. The abdomen, a padded cloth attached by Velcro to the base, makes it easy to visualize and change fetal positions. Comes with a gel pad that provides added cushion over the fetus for a more realistic feel, 12 movable gel packs to simulate amniotic fluid, and a practice guide with detailed suggestions on how to use the model. The Set also includes a carrying bag.



10 INJECTION TRAINING ARM MODEL

Realistic, accurate, and economical, the Injection Training Arm features latex skin and palpable veins that may be injected with a syringe or IV drip at the antecubital fossa, forearm, and back of the hand. The skin will stand up to multiple needle sticks and can easily be washed with soap and water. Comes with carrying case.



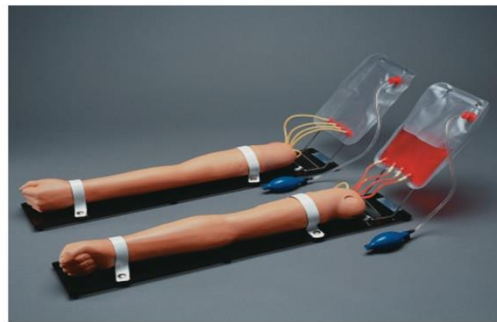
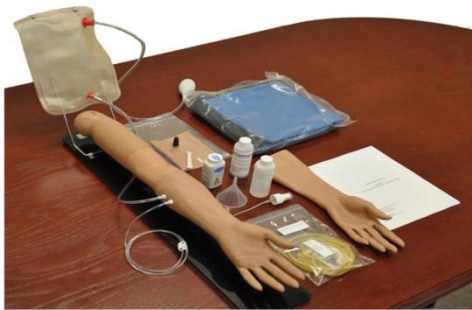
11 INJECTION TRAINING HAND MODEL

Use this lifelike hand model to teach injection and blood-draw procedures. Made of realistic, soft BIOLIKE 2™ synthetic tissue, this training model has palpable veins as well as lifelike skin, texture, and flexibility, allowing it to provide a highly realistic training experience. Model can be injected with air or water.



12 ADVANCED MULTIPURPOSE VENEUS TRAINING MODELS

Use this 22"-long arm model to provide IV, IM, and subcutaneous training, including injections, blood collection, and infusion techniques. Features cephalic, basilic, antecubital, radial, and ulnar veins. Comes with simulated blood concentrate, pressure bulb, blood dispensing bag, spare arm skin and veins, funnel, powder, carrying bag, and instruction manual. An excellent teaching tool.





GD/H120A ADVANCED NURSING & WOUND CARE MANIKIN (MALE)

GD/H120B ADVANCED NURSING & WOUND CARE MANIKIN (FEMALE)

UGX 12,000,000

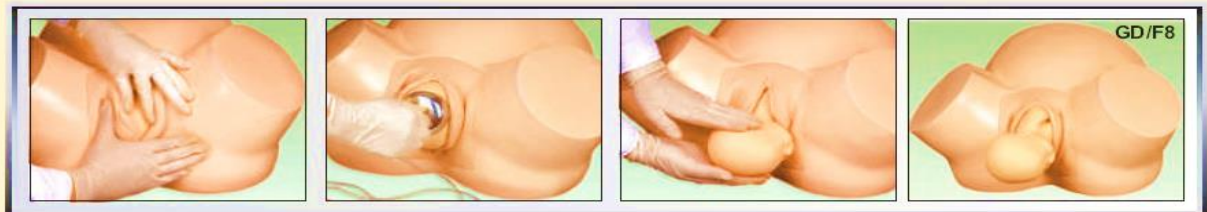
Full Body Lifelike UNISEX Manikin. Specifically Designed For Professional Nursing Training.

High Quality Manikin Provides Wide Range of Exercise Possible Including Both First Aid and Emergency Situation.

NURSING SKILL:

- | | |
|--|--|
| <ol style="list-style-type: none"> 1. Hair and Face Washing, Hair Combing 2. Eye and Ear Washing and Administering 3. Mouth Cavity and Artificial Teeth Care 4. Endotracheal Intubation 5. Sputum Suction 6. Oxygen Inhaling 7. Oral and Nasal Feeding 8. Gastrolavage 9. Main Organs In Thoracic Cavity 10. Venipuncture, Injection, Blood Transfusion (Arm) 11. Deltoid Subcutaneous Injection 12. Vastus Lateralis Injection 13. Thoracic Cavity, Abdominal Cavity, Liver, Bone Marrow and Lumbar Puncture | <ol style="list-style-type: none"> 14. Enema 15. Female Urethral Catheterization 16. Male Urethral Catheterization 17. Female Bladder Irrigation 18. Male Bladder Irrigation 19. Ostomy 20. Buttocks Intramuscular Injection 21. Main Organs In Abdominal Cavity 22. Holistic Nursing Care: Sponge Bath, Replacing Clothes Cold and Heat Therapy 23. Limbs Joints: Bend, Rotation and Upper Or Lower Movement 24. Trauma Evaluation and Care: Washing, Disinfection, Enswathing Of The Wound; Hemostasis and bandaging. |
|--|--|

ALL THE NURSE TRAINING MODELS & ANATOMICAL MODELS ARE AS PER INTERNATIONAL SPECIFICATIONS



GD/F8, XC 419 A

UGX 3,500,000

MIDWIFERY TRAINING SIMULATOR

1. This simulator can help to demonstrate all the process of delivery.
2. The life-size pelvic cavity has main anatomical structures.
3. it can help train the skills of Delivery.

GD/H130

UGX 4,000,000

ADVANCED NURSING BABY UNISEX

Specifically Designed for Professional Nursing Training. High Quality manikin provides wide range of exercises possible including both first aid and emergency situations.

NURSING SKILLS:

1. Head Neck and Limbs Can Be Moved Freely.
2. The Chest Skin Can Be Replaced
3. Cephalic Venipuncture
4. Umbilical Venipuncture
5. Oral and Nasal Intubation Nursing
6. Care Of Gastrolavage, Enema and Urethral Catheterization
7. Ostomy
8. Deltoid Subcutaneous Injection and Buttocks Intramuscular Injection
9. Holistic Nursing Care: Sponge Bath, Replacing Clothes, Lactation and Diaper Changing



GD/H130